

COVID-19 Response in Nigeria - a practical guide to Disability Inclusion



There are approximately 25 million persons with disabilities in Nigeria

- 1** Persons with disabilities are among the most vulnerable and socially excluded groups in any community. Every day they encounter difficulty accessing services due to the discrimination they experience on the basis of their disability.
- 2** How much thought has been given to ensuring that persons with disabilities are not overlooked in the design and implementation of federal or state health and humanitarian responses to COVID-19?
- 3** It remains critical that persons with disabilities should be consulted at planning, implementation and review stages

For more information contact:

Disability Rights Advocacy Centre (DRAC)

Address: Plot 690 AKON HOUSE, Idris Gidado Street, Wuye District, Abuja
Phone number: 08115326607 Email: drac.nigeria@gmail.com
Social media: @DRACNigeria

COVID-19 Response in Nigeria - a practical guide to Disability Inclusion



Targeting information and communication to persons with disabilities

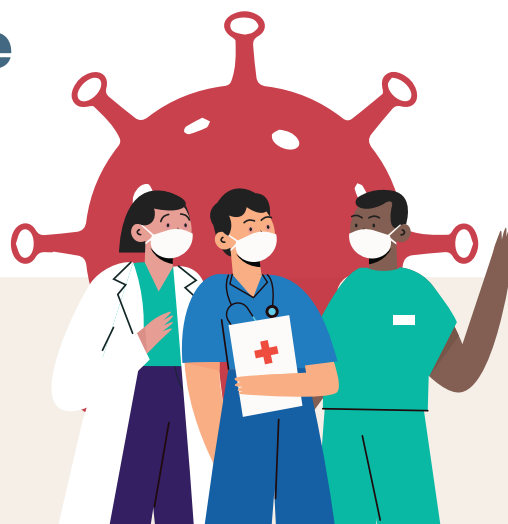
- 1** Consult persons with disabilities in the design of accessible information, education and communication content and material
- 2** Adopt captioning and /or sign language interpretation during all television broadcasts on COVID-19
- 3** Consult the directory of accredited sign language interpreters to secure their services where needed
- 4** All COVID-19 information and resources should be available in audio and large print format (Arial font 12 - 16) for the blind and persons with low vision respectively
- 5** Use non-stigmatizing, disability friendly images in publicity materials
- 6** Use accessible technology to create web text

For more information contact:

Disability Rights Advocacy Centre (DRAC)

Address: Plot 690 AKON HOUSE, Idris Gidado Street, Wuye District, Abuja
Phone number: 08115326607 Email: drac.nigeria@gmail.com
Social media: @DRACNigeria

COVID-19 Response in Nigeria - a practical guide to Disability Inclusion



An inclusive medical response

- 1 Adopt the principle of 'Universal Design' to ensure compliance of isolation centers, relief distributions centres with the minimum standards of accessibility
- 2 Ensure testing and isolation centers are wheel-chair accessible, including the toilets
- 3 Hospital beds and diagnostic equipment should be height adjustable for persons with mobility impairments
- 4 Train and sensitize doctors and healthcare staff on disability rights and inclusion
- 5 Deploy accredited sign language interpreters to provide communication support to deaf persons at testing and isolation centers

For more information contact:

Disability Rights Advocacy Centre (DRAC)

Address: Plot 690 AKON HOUSE, Idris Gidado Street, Wuye District, Abuja
Phone number: 08115326607 Email: drac.nigeria@gmail.com
Social media: @DRACNigeria

COVID-19 Response in Nigeria - a practical guide to Disability Inclusion



An inclusive social welfare response

- 1 Deliberately identify / seek out persons with disabilities and prioritize them in the distribution of food and relief materials
- 2 Introduce mobile distribution systems to reach those with extreme mobility challenges
- 3 All COVID-19 response initiatives must be deliberately inclusive of, and accessible to women and girls with disabilities who are even more vulnerable and disadvantaged
- 4 Identify specific risks that may be exacerbated for persons with disabilities during a crisis e.g. exploitation, neglect, physical and sexual abuse, especially of women and girls with disabilities
- 5 Collect disability disaggregated data on all services and surveillance during COVID-19 response to aid future planning

For more information contact:

Disability Rights Advocacy Centre (DRAC)

Address: Plot 690 AKON HOUSE, Idris Gidado Street, Wuye District, Abuja
Phone number: 08115326607 Email: drac.nigeria@gmail.com
Social media: @DRACNigeria